

암환자와 비암환자에서의 급성신손상의 임상결과

고신대학교 의과대학 내과학교실

신호식, 김예나, 구상건, 이준섭, 유진석, 정연순, 임학

Outcomes of Acute Kidney Injury Patients with and without Cancer

Ho Sik Shin, Ye Na Kim, Sangeon Gwoo, Junseop Lee, Jin Seok Yoo, Yeon Soon Jung, Hark Rim

Department of Internal Medicine, Kosin University College of Medicine

Background: Few studies have examined the characteristics and outcomes of acute kidney injury (AKI) patients with and without cancer.

Methods: We conducted a retrospective cohort study in a South Korean tertiary care hospital. A total of 2211 consecutive patients (without cancer 61.5%; with cancer 38.5%) were included over a 140-month period. Predictors of all-cause death were examined using the Kaplan–Meier method and the Cox proportional hazards model.

Results: The main contributing factors of AKI were sepsis (31.1%) and ischemia (52.7%). AKI was multifactorial in 78% of patients with cancer and in 71% of patients without cancer. Hospital mortality rates were higher in patients with cancer (42.8%) than in patients without cancer (22.5%) ($p=0.014$). In multivariate analyses, diabetes mellitus (DM) and cancer diagnosis were associated with hospital mortality. Cancer diagnosis was independently associated with mortality [odds ratio=3.010 (95% confidence interval, 2.340–3.873), $p=0.001$]. Kaplan–Meier analysis revealed that subjects with DM and cancer ($n=146$) had lower survival rates than subjects with DM and without cancer ($n=687$) (log rank test, $p=0.001$).

Conclusions: The presence of DM and cancer were independently associated with mortality in patients both with and without cancer

Key Words: 급성신손상, 암, 당뇨

Acute kidney injury, Cancer, Diabetes Mellitus

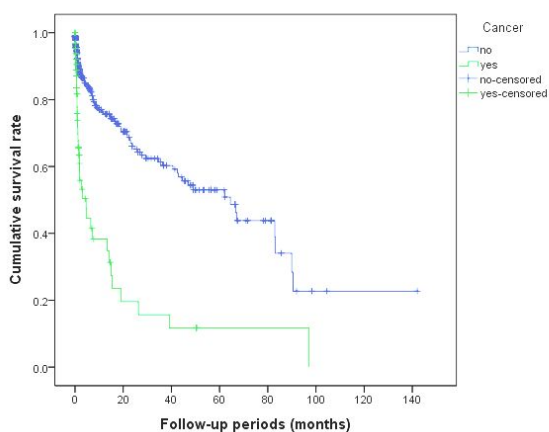


Fig. 1. Survival curve in cancer and non-cancer patients with DM.

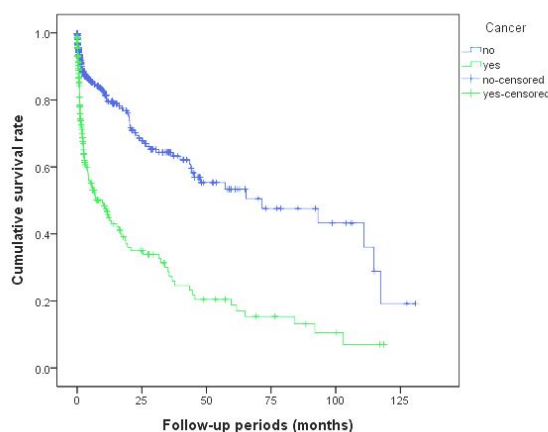


Fig. 2. Survival curve in cancer and non-cancer patients without DM.